

BRITISH THORACIC SOCIETY WINTER MEETING 2019

(TUESDAY 3RD) WEDNESDAY 4TH TO FRIDAY 6TH DECEMBER
Fleming & Whittle and Britten, 3rd Floor
QEII Centre, London

EXHIBITION FLOOR PLAN & INFORMATION

IMPORTANT INFORMATION – PLEASE READ!

STAND SIZES

Space only stands:

Stands 1 and 2: 5m (w) x 4m (d) x 2.44 (h) Maximum height is 3.20

Stands 3 and 4: 6m (w) x 4m (d) x 2.44 (h) Maximum height is 3.20

Shell scheme stands:

Stands 5 to 36: 3m (w) x 2m (d) x 2.44m (h) Maximum height is 3.20

Stands 37 to 42: 3m (w) x 2m (d) x 2.44m (h) Maximum height is 2.44

Charity/non-commercial stands:

Stands A to T are table-top stands only and may not be booked by commercial companies, as they are reserved for charity/non-commercial exhibitors and one bookstall.

SHELL SCHEME AND SPACE ONLY

In the Fleming and Whittle (F&W), a maximum of 4 stands may be adjoined to make a larger space.

In the Britten, stands may not be adjoined and are not suitable for complex stand builds.

With the exception of stands 1 to 4, all stands in the **F&W** will be supplied and built with shell scheme.

In the **Britten**, stands 37 to 42 will be built with shell scheme.

For space only stands, or those choosing not to have the supplied shell scheme, appropriate walls must be built by contractors to separate adjoining stands. Full drawings for bespoke stands must be submitted to: cathryn@csconferences.co.uk by **7th October 2019**.

The maximum height of stands in the Fleming/Whittle is 3200mm and in the Britten is 2440mm.

ELECTRICS

Shell scheme stands include 2 x 100w spotlights and 1 x 13amp 3-pin power, 240 volts.

Table-top stands (letters B-T) include 1 x 13amp 3-pin power, 240 volts.

Space-only stands, or those choosing not to have the supplied shell scheme, must order and pay direct for a mains electrical supply and electrical points.

FLOORING

The carpet in all exhibition areas is charcoal grey.

EXHIBITION BUILD UP

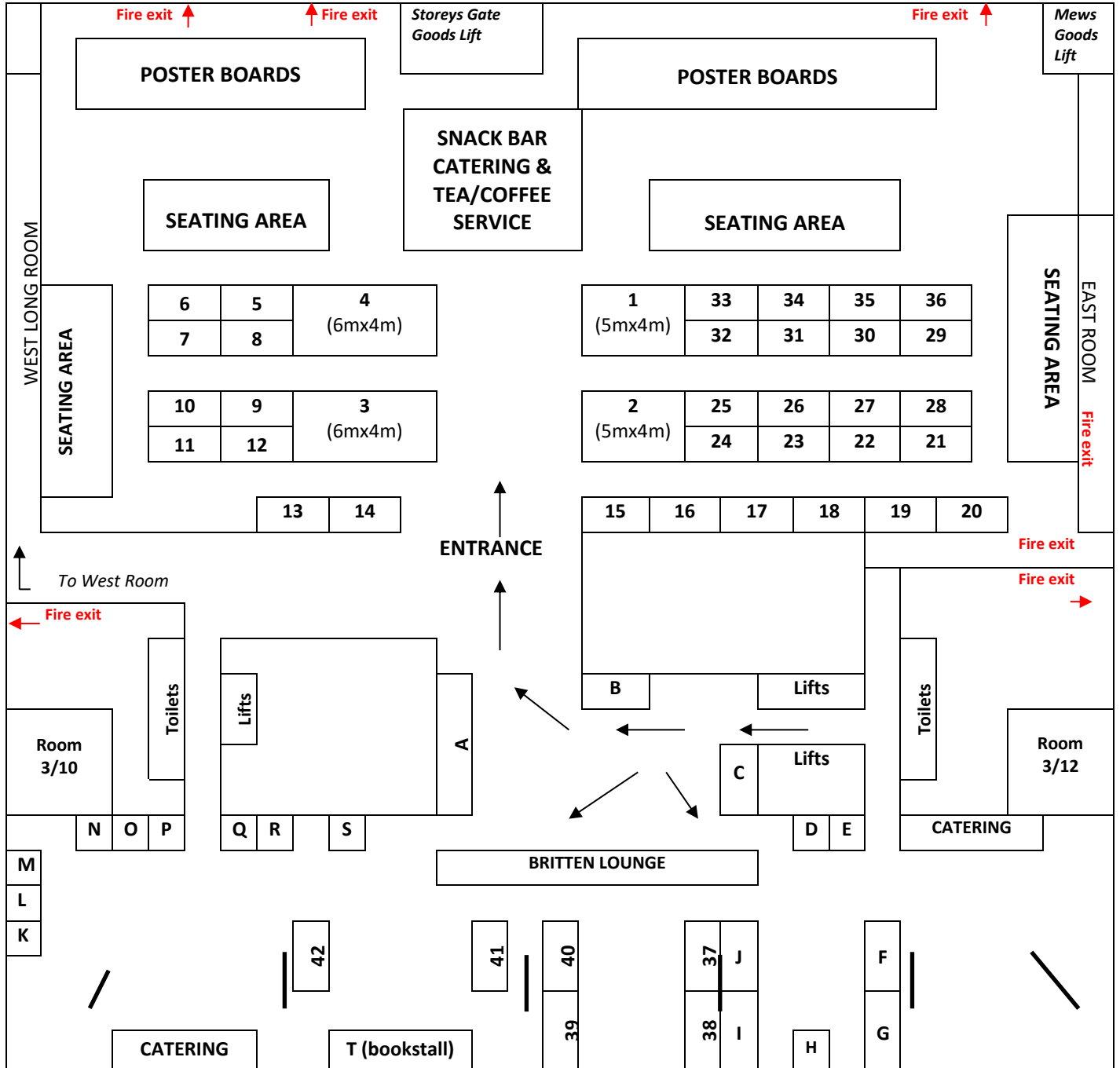
Tuesday 3rd December, between 11.00am and 8.00pm. An access schedule will be in use and must be adhered to.

EXHIBITION BREAK DOWN

Friday 6th December, between 2.30pm and 8.00pm. An access schedule will be in use and must be adhered to.

Floor plan over page.....

British Thoracic Society Winter Meeting 2019 – Exhibition Floor Plan



Key and = Pillars

NB: PLAN IS NOT TO SCALE